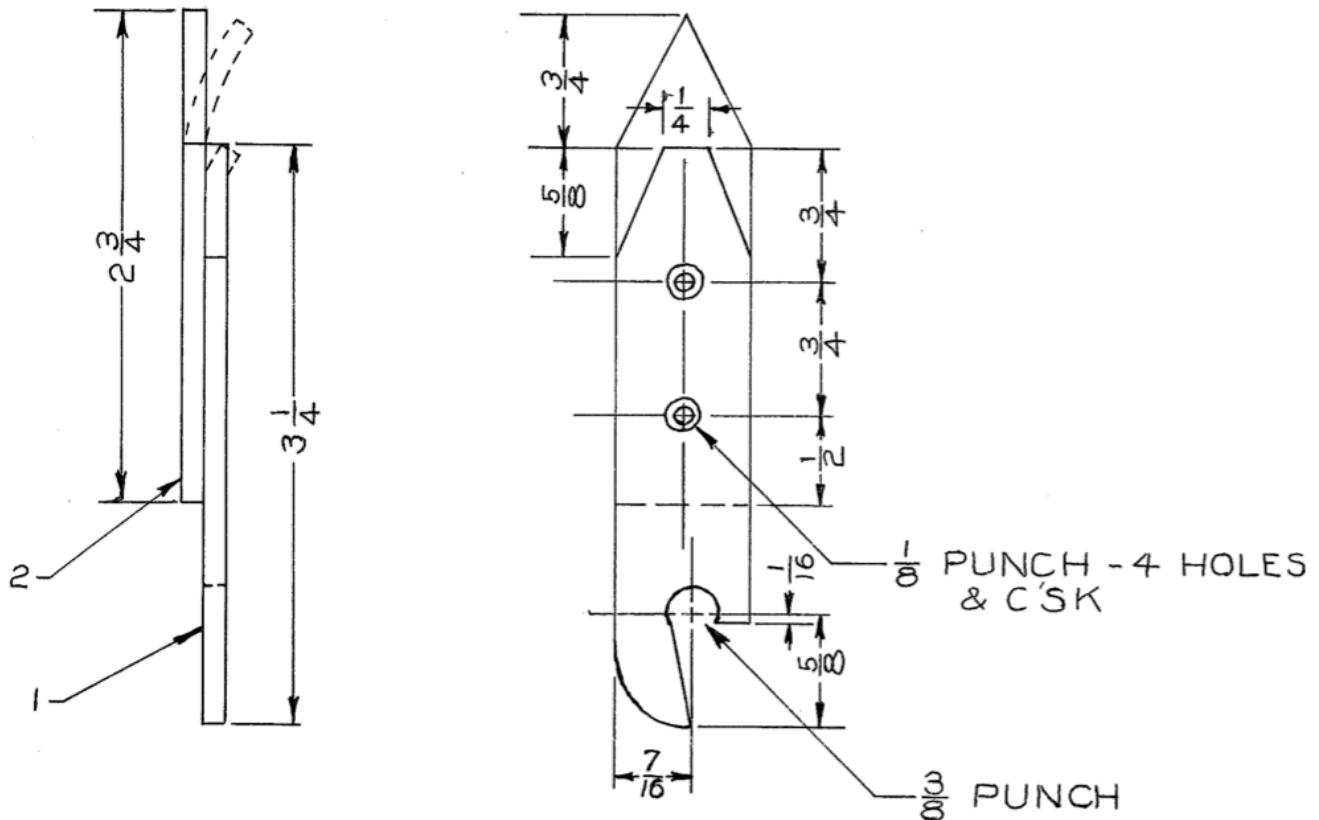


Can Punch and Bottle Opener Project



Material: One piece of 6" of $\frac{1}{8}$ " thick Band Iron. Two $\frac{1}{8}$ " rivets

Width can be either $\frac{3}{4}$ " wide or 1" wide as long as measurements are done from the center line

Procedure:

1. Cut piece of $\frac{1}{8} \times \frac{3}{4}$ (or 1") $\times 6\frac{1}{2}$ band iron. (ALL MEASUREMENTS IN IMPERIAL)
2. Measure and cut parts 1 & 2 (1 piece $2\frac{3}{4}$ long and 1 piece $3\frac{1}{4}$ long).
3. File ends square and draw file scale off faces and edges of both pieces.
4. Layout both pieces with above measurements and have checked by the teacher.
5. Center punch the 5-hole locations.
 - a. Piece number 2 drill both at $\frac{1}{8}$ "
 - b. Piece number 1 drill top hole $\frac{1}{8}$ and bottom hole $\frac{3}{8}$. Do not drill middle hole!
 - c. Piece number 1 counter sink top hole to match drawing (ask for help).
6. Saw and file ends to shape for both pieces. Get help with layout and cutting/grinding techniques so you don't have to start over.
7. Bend offset on piece 1 and curve for piece 2.
8. Rivet top hole based on teacher demo. Drill middle hole in piece 1 using piece 2 as a guide. Countersink and install 2nd rivet.
9. Sand, polish, and finish (paint, lacquer, etc).