

18 gauge (0.040", 1.02 mm)  
aluminum sheet metal

- 1.) Mounting hole centres for Tamiya twin-motor gearbox are exactly 49 mm apart.
- 2.) Before folding, punch all holes  $\varnothing 1/8"$  0.125" (3.175 mm).
- 3.) Deburr all holes.
- 4.) Draw file and emery cloth all edges before folding.
- 5.) File all corners round.

Scale: 1:1

# MINI-SUMO BASE

Design: J. Brett

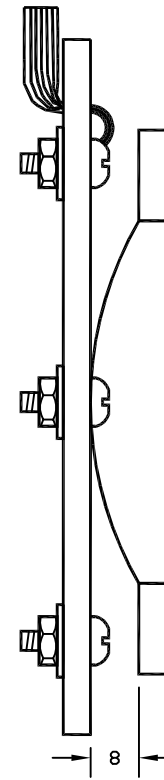
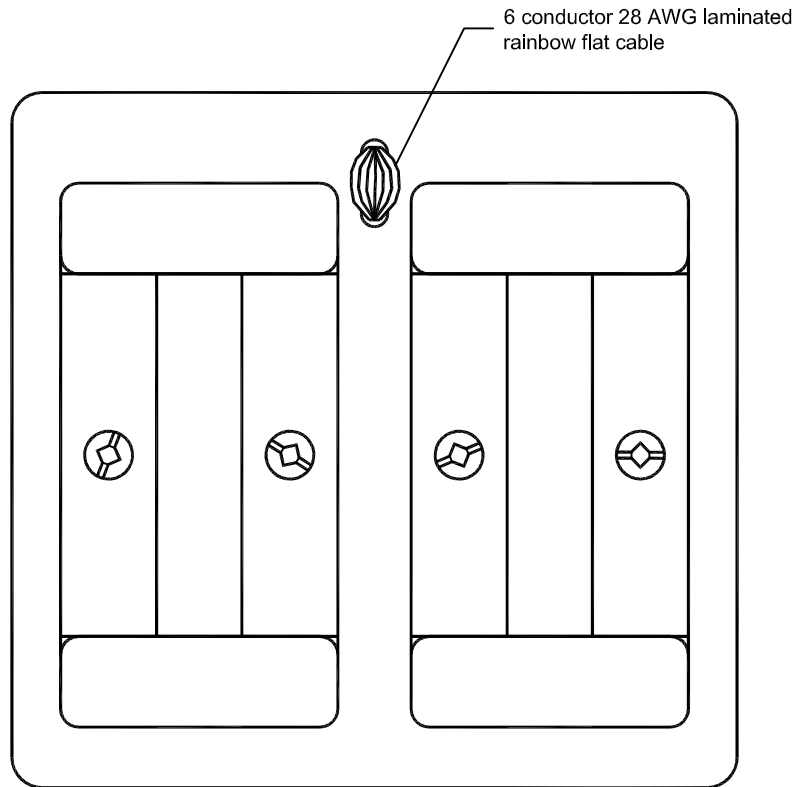
Drawn By: J. Li

Drawing: 1 of 9

Revised: T. Gibbens

Sir W. Churchill Secondary

Date: 22.10.2006



- FASTENINGS
- 1.) 12 - 32 X 1/2" ROUND ROBERTSON HEAD MACHINE SCREWS
  - 2.) 12 - 32 HEX MACHINE SCREW NUTS
  - 3.) 12 - SAE FLAT WASHERS

Scale: 1:1

## MINI-SUMO CONTROLLER ASSEMBLY

Design: J. Brett

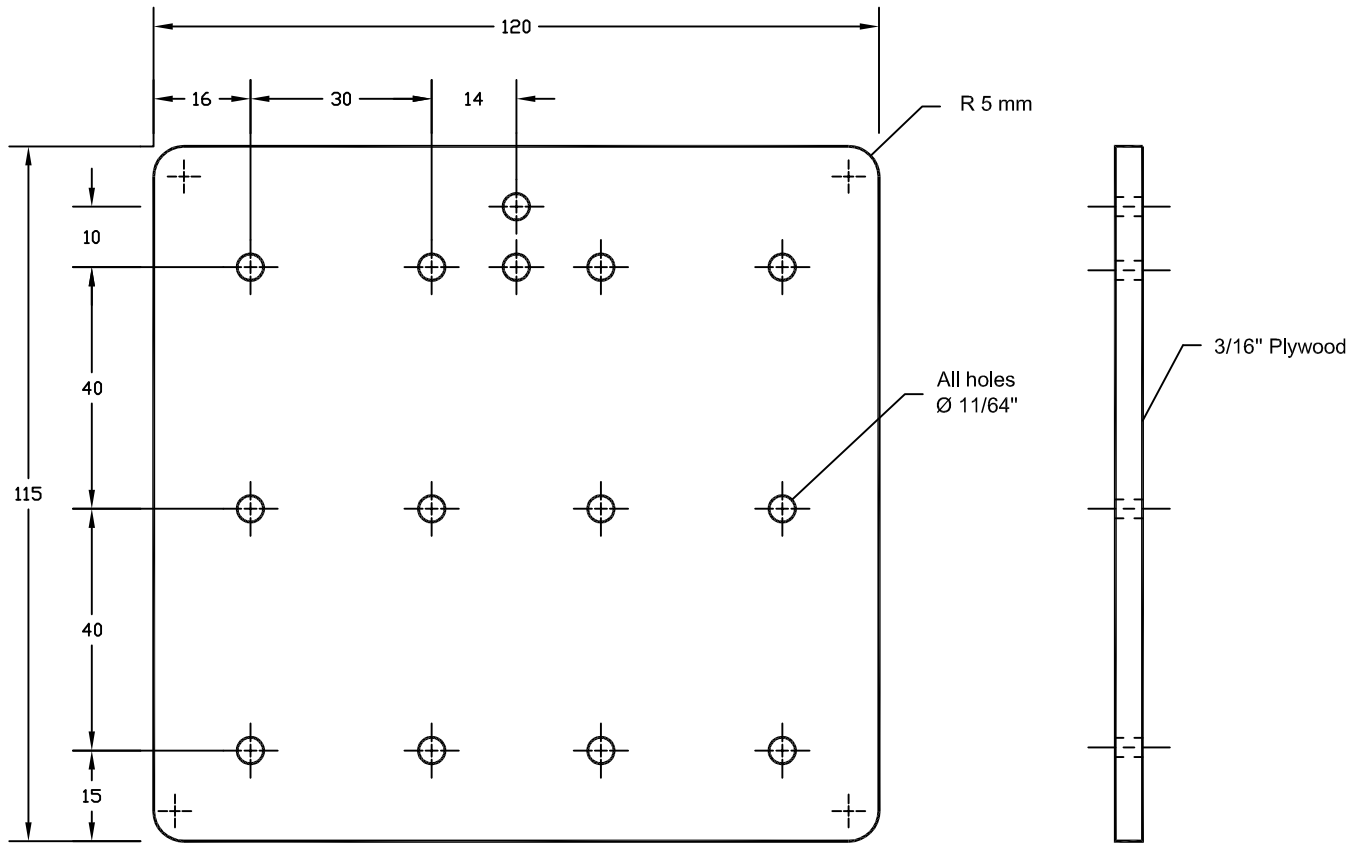
Drawn By: J. Li

Drawing: 4 of 9

Revised: T. Gibbens

Sir W. Churchill Secondary

Date: 22.10.2006



Drill all holes on drill press

Scale: 1:1

# MINI-SUMO CONTROLLER BOARD

Design: J. Brett

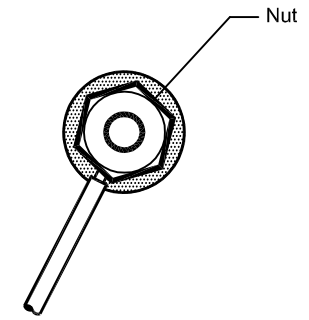
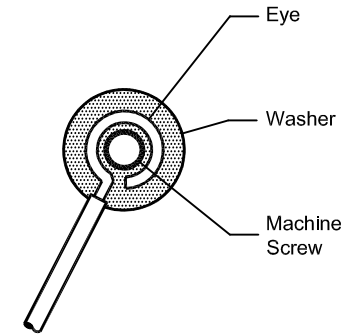
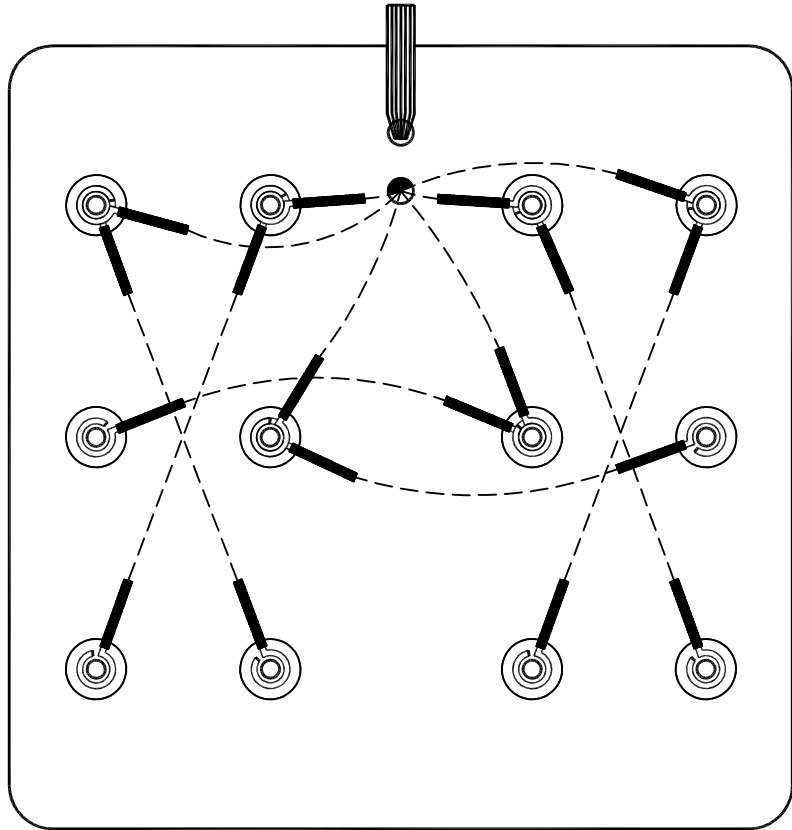
Drawn By: J. Li

Drawing: 3 of 9

Revised: T. Gibbens

Sir W. Churchill Secondary

Date: 22.10.2006



Scale: 2:1

Scale: 1:1

# MINI-SUMO CONTROLLER WIRING

Design: J. Brett

Drawn By: J. Li

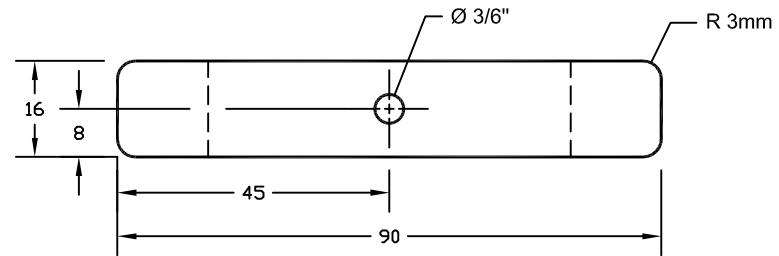
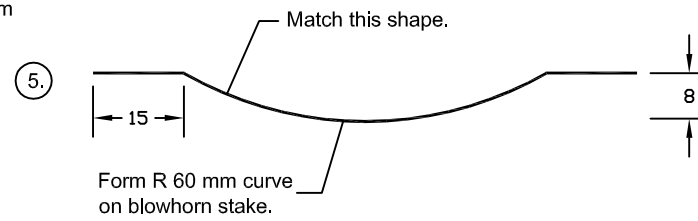
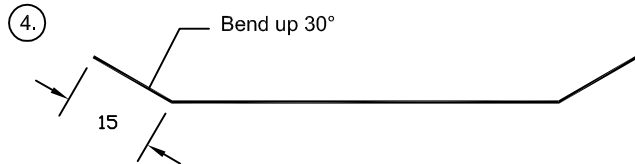
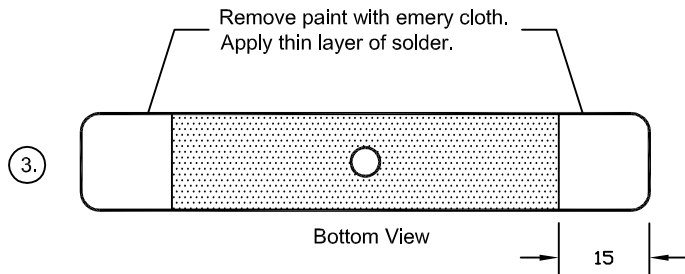
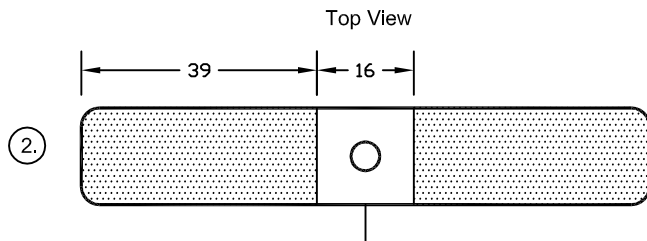
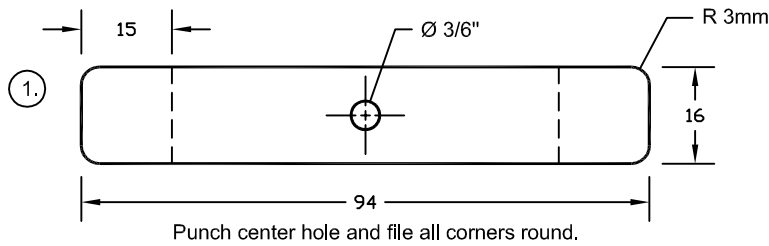
Drawing: 5 of 9

Revised: T. Gibbens

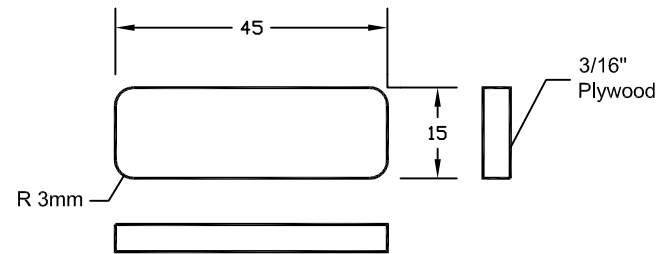
Sir W. Churchill Secondary

Date: 22.10.2006

### BLACK ENAMELED STEEL BANDING SPRING

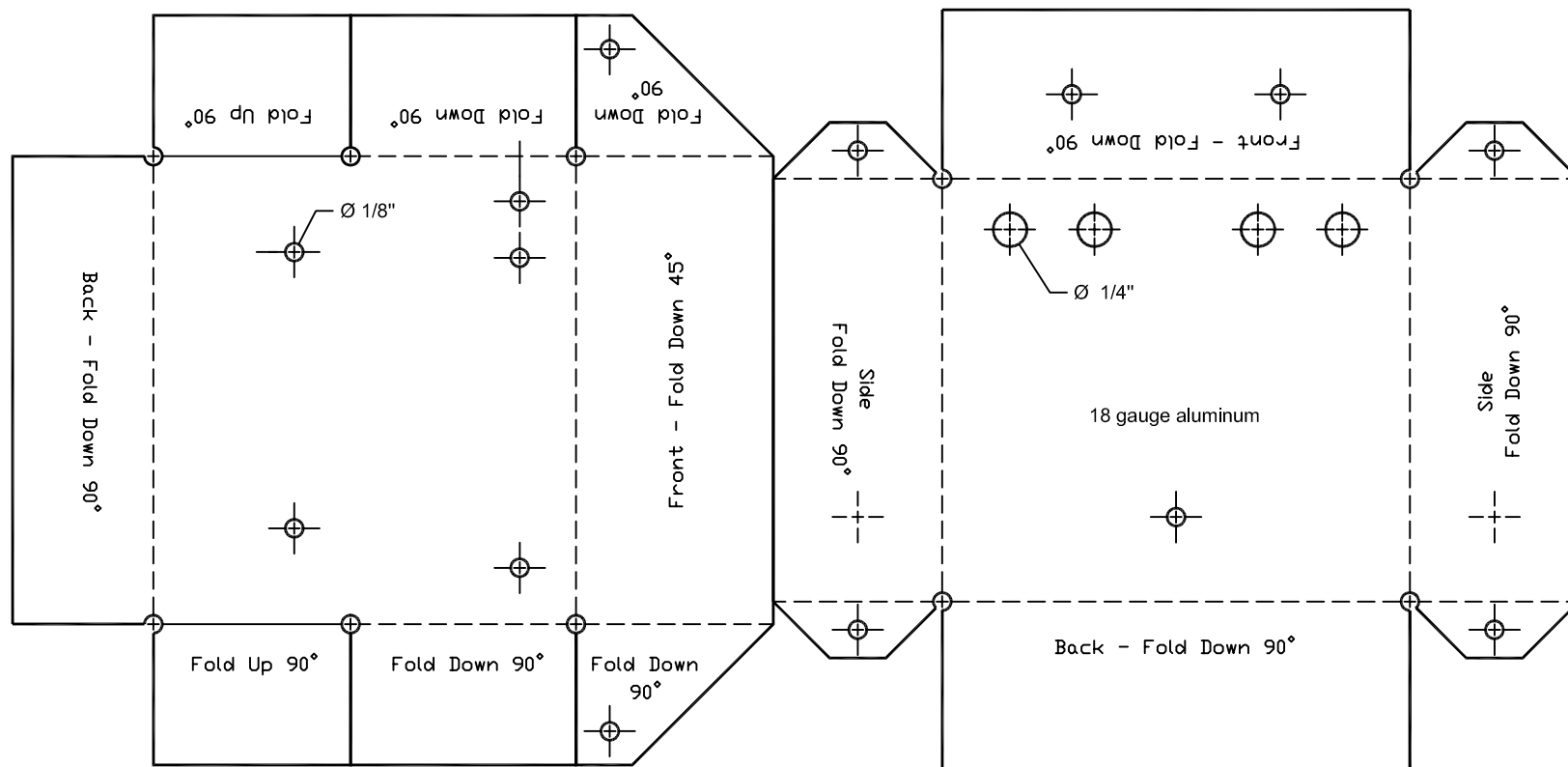


### BUTTON



Scale: 1:1

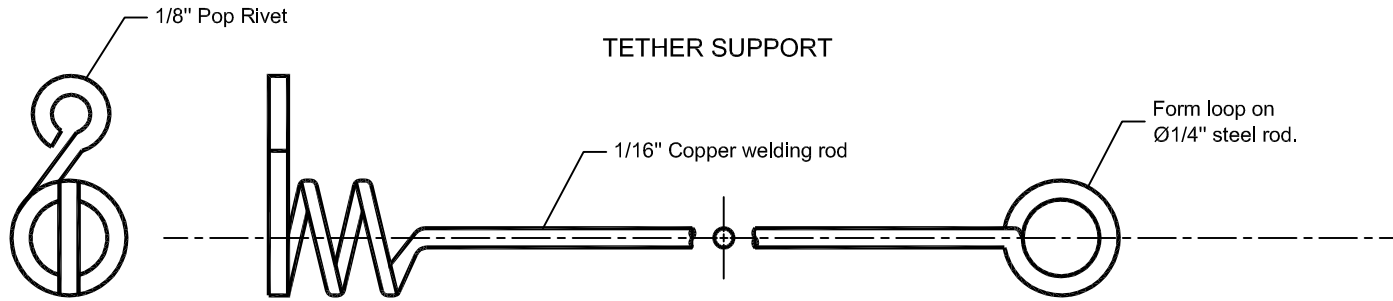
<b>MINI-SUMO SPRING &amp; BUTTON</b>	Design: T. Gibbens	Drawn By: J. Li	Drawing: 6 of 9
	Sir Winston Churchill Secondary School		Date: 04.11.2006



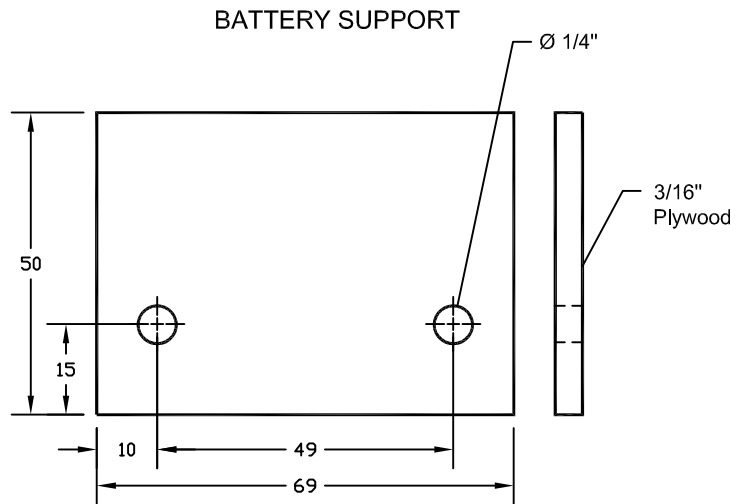
Scale: 1:1

# MINI-SUMO STRETCHOUT

Design: J. Brett	Drawn By: J. Li	Drawing: 9 of 9
Revised: T. Gibbens	Sir W. Churchill Secondary	Date: 05.11.2006



Scale: 2:1



Scale: 1:1

MINI-SUMO -- TETHER SUPPORT & BATTERY SUPPORT

Design: J. Brett

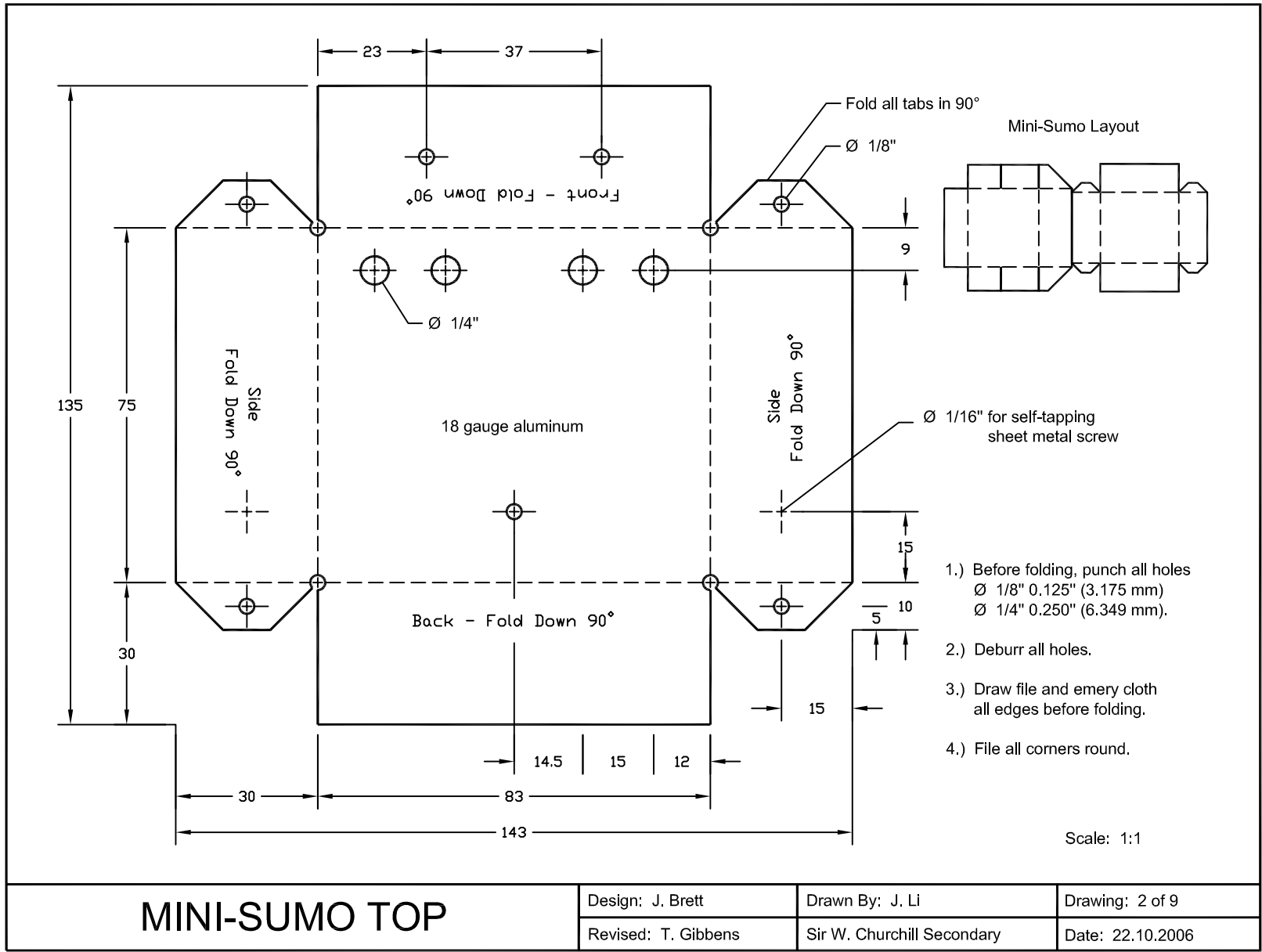
Drawn By: J. Li

Drawing: 7 of 9

Revised: T. Gibbens

Sir W. Churchill Secondary

Date: 05.11.2006



# MINI-SUMO TOP

Design: J. Brett

Drawn By: J. Li

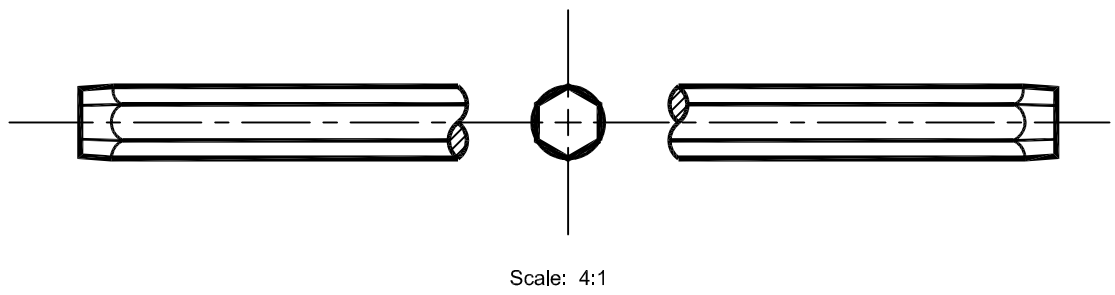
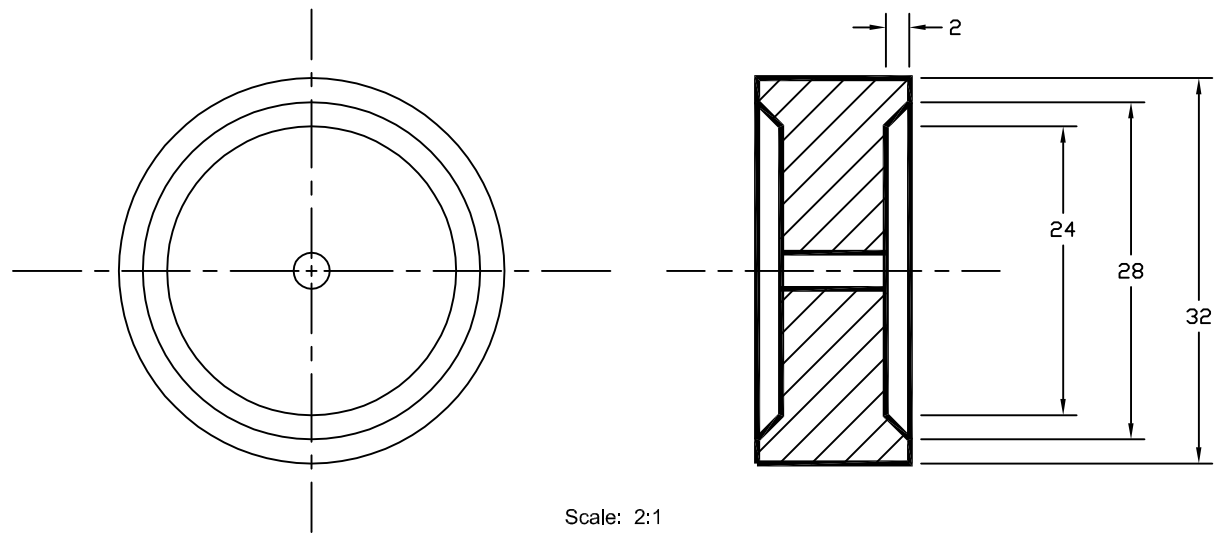
Drawing: 2 of 9

Revised: T. Gibbens

Sir W. Churchill Secondary

Date: 22.10.2006





# MINI-SUMO WHEEL & AXLE

Design: J. Brett

Drawn By: J. Li

Drawing: 8 of 9

Revised: T. Gibbens

Sir W. Churchill Secondary

Date: 05.11.2006